

ImageTek™ COLOUR



ImageTek™ COLOUR is a 100% paint coverage product suitable for spandrel and cladding glass that creates brilliantly smooth surfaces, adding perspective and contrast to indoor and outdoor spaces. The print process uses high quality ceramic based inks which are fused onto the glass surface during toughening.



Lacobel® T Deep Black - Unilodge Park Central



STANDARD COLOUR RANGE¹

BRONZE

SANDBANK

DEEP BLACK*

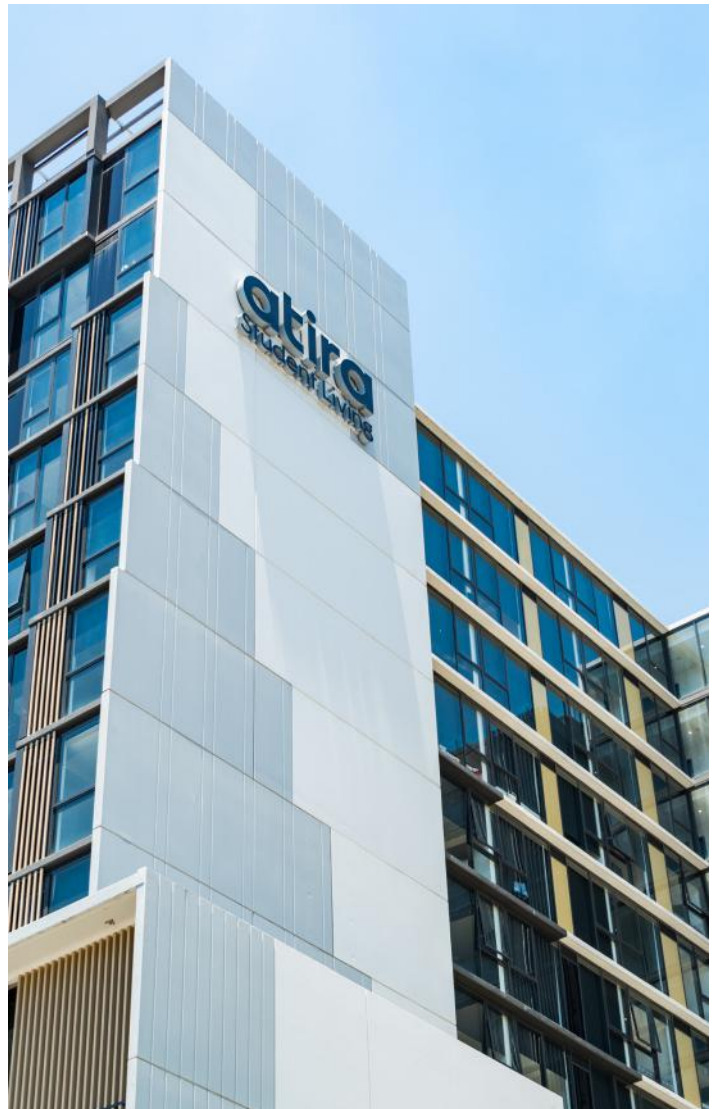
COOL GREY

CEMENT GREY

COOL WHITE*

MONUMENT

ANTHRACITE GREY*



ImageTek™ COLOUR - Sandbank Atira Student Living

¹Colours indicative only. Request sample for approval.

*Lacobel® T range

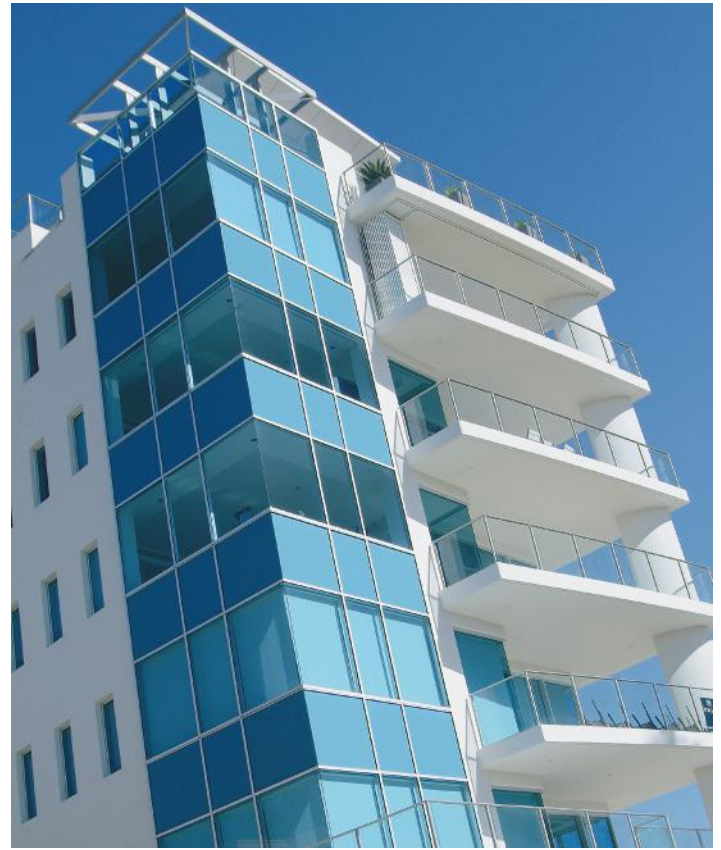
ImageTek™ COLOUR



SPANDREL

Spandrel glass panels are used to hide building structures between floors. Ceramic printed glass such as ImageTek™ COLOUR or Lacobel® T are the most common products used in these applications. These products are always tempered, either toughened or heat strengthened depending on the application. Tempering is required because of the excessive heat build up within spandrel cavities where temperatures over 90°C are possible. Where glass is not subject to human impact, heat strengthened glass is recommended, where in the event of breakage, the glass tends to fragment into large pieces and stay intact in the opening or framework.

Generally spandrel panels in buildings allow for viewing of the glass from the outside only. Some applications are designed to be viewed from both sides of the glass. Though this is possible, we do not recommend this 'two way' viewing or any sort of 'backlighting' especially from the printed side of the glass due to print surface imperfections. These imperfections in a true spandrel cavity are not seen. For more information on spandrel glass design including matching to vision panels, see ImageTek™ Design & Glazing Notes document.



6mm Dark Blue vision glass with contrasting coloured spandrel glass



ImageTek™ COLOUR- Sandbank Atira Student Living